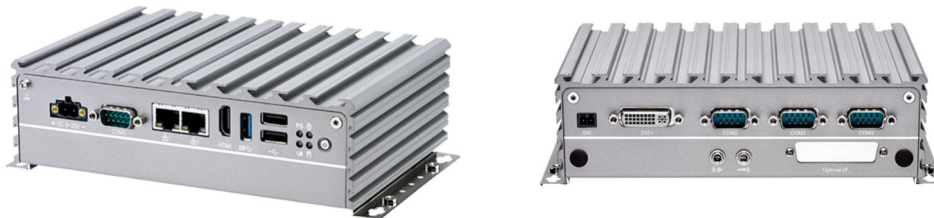


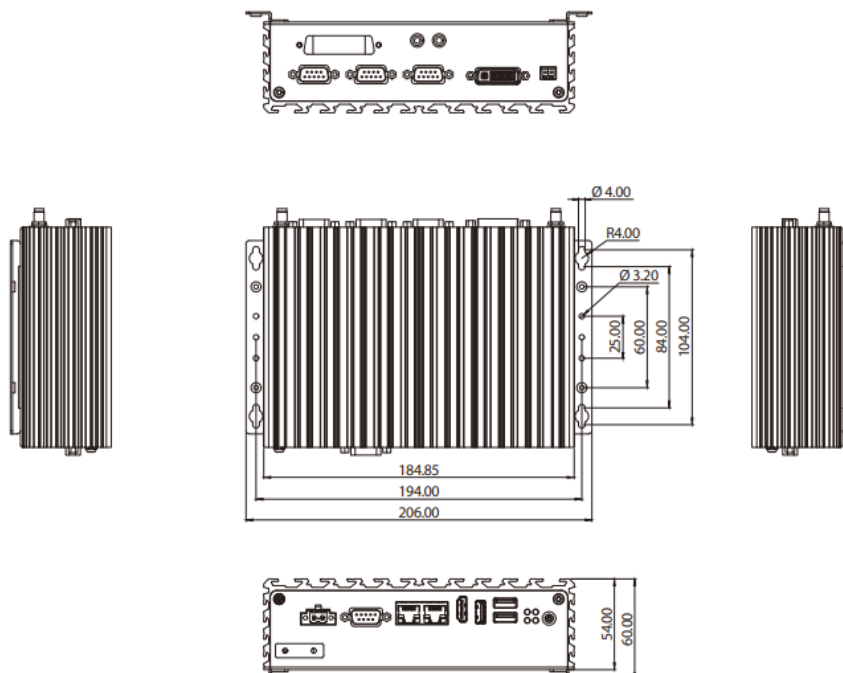
Systemunit Protrak NAVCOM

Order-No.: SR2r23

Type	SR2 Rev 23
Processor	CPU Intel Celeron J1900 Quad Core processor, 2,42GHz , fanless Design
Storage	8GB RAM, 120GB Harddisk, (10G shockproof),
Graphics	integrated in Intel L1900 resolution up to 1920x1080, Dual independent displays HDMI and DVI HDMI and VGA (via DVI-I)
Audio	HD audio digital, Mic in, LS out
Ports	4x RS232/422/485, 2x Net 1G, 1x USB 3, 2x USB 2, Simcard Holder, 2x Antennaholes,
Weight	2,1 kg
Temperature	-5 bis 55° C ggf. externe Luftzirkulation einsetzen
Power	Typical 9-30 VDC Terminal Block max 20W full load typ. 5-8W
Dimensions	185x131x54mm HxBxD (HxWxD)
Operating System	W7/W10 pro ask for language, ger / e / , bitte Installationsprache angeben D / E / FR / SP/ PT/PO/RU
optional	LTE Modem, Wlan, 4 RS232/422 NMEA, NMEA2000
Accessories	
DVD CD-Rom Drive	External USB
External connectors, externe Anschlussplatten	ON / OFF , 2x USB,
Keyboard / Mouse	Mini 86 Keys, German Layout, engl Layout , standard USB Maus
Mechanical/ Zubehör mech.	



Mechanical Dimensions



NAVCOM

SR2 Rev 23 - Okt.22